

MOSSEC POLARSYS/PAPYRUS PROJECT SETUP FROM ZIP

OVERVIEW	1
1. DOWNLOAD THE ZIP FILE	2
2. SETUP PLCSLIB (INCLUDING MOSSEC)	3
3. SETUP TOICA	6
4. SET MODEL LOADING PREFERENCES	10



These instructions are for opening the MoSSEC and TOICA public zip file published at the end of the TOICA project. This method will exclude participation in development of the information model, and uses a version of the information model frozen during the TOICA project.



This guide assumes PolarSys/Papyrus has been installed and the Papyrus view has been enabled.

OVERVIEW

The steps you will follow are:

1. Download the zip file
2. Setup PLCSlib (including MoSSEC) as a project in PolarSys/Papyrus
 - PLCSlib is the AP239 (PLCS) library. It is needed because the Business Objects are mapped to AP239, and so it provides the profile and base objects used.
3. Setup TOICA as a project in PolarSys/Papyrus

1. DOWNLOAD THE ZIP FILE

Step 1.

- Download the zip file ([TOICA SysML_June2016.zip](#)) from the [TOICA public downloads](#) site.
- Unzip. It contains two folders, 'plcslib' and 'TOICA'

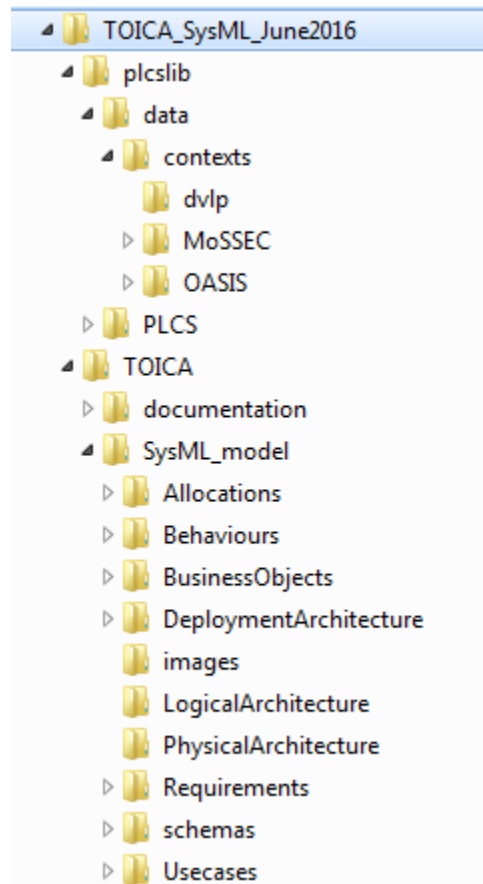


Figure 1 Unzipped file

2. SETUP PLCSLIB (INCLUDING MOSSEC)

Step 2. load plcslib into PolarSys/Papyrus:

- Open PolarSys/Papyrus and select the Papyrus viewpoint if not already selected.
- Create a new project (File --> New --> Project)
- Select Papyrus Project and click next

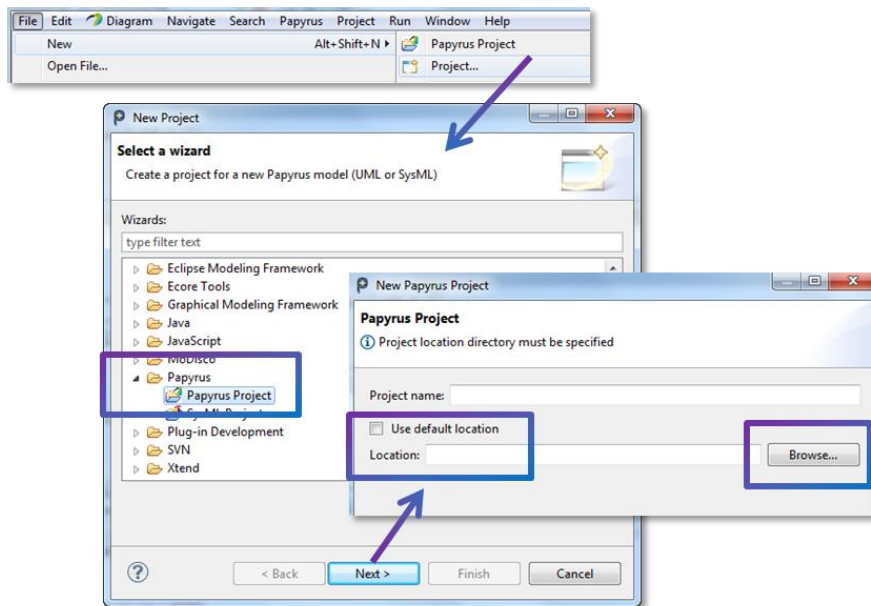


Figure 2 Create new project

- Un-tick the "Use default location" checkbox
- Select "Browse"
- Select the plcslib folder from the unzipped folder

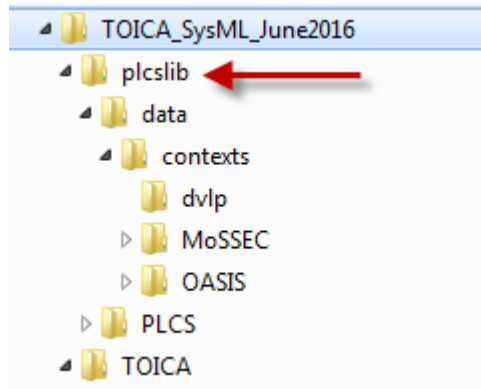


Figure 3 Select plcslib

- Set the Project name as "plcslib". Click Next

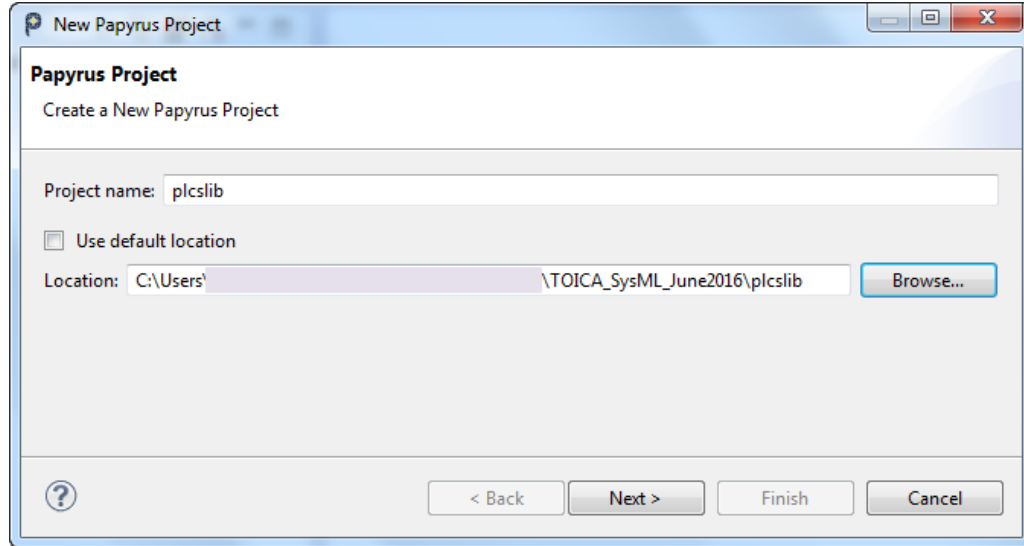


Figure 4 Set project name

- Set the diagram language as SysML. Click Finish

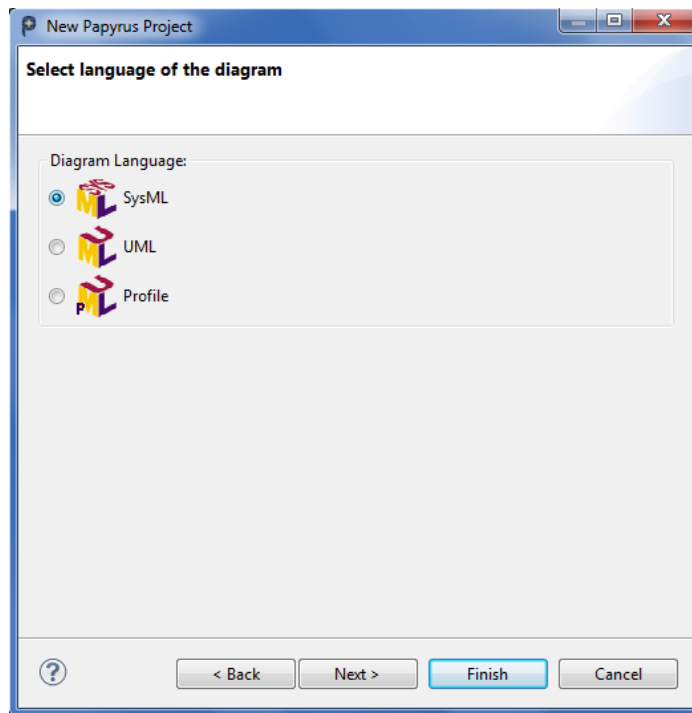


Figure 5 Select SysML diagram

Optionally open the CommonSysML model

To open the Common SysML model expand the MoSSEC project and the sub folder Common where you will find the model CommonSysML. Double click to open.

Project co-funded by the European Commission within the Seventh Framework Programme This document has been produced under the EC FP7 Grant Agreement 604981. This document and its contents remain the property of the beneficiaries of the **TOICA Consortium** and may not be distributed or reproduced without the express written approval of the TOICA Coordinator, **Airbus Operations SAS**.

For more details on using Papyrus see https://wiki.eclipse.org/Papyrus_User_Guide



If the model takes a very long time to open, or does not open at all, then you will need to change the 'Window > Preferences > Papyrus > Model Loading' option so that it is any of the last three options i.e. NOT 'Load all the needed resources', See §0 for more details.

The model opens in the "Model Explorer" window. In this window, use the arrows to expand the structure of the model. Double-click on Diagrams to display them in the "Editor" window as shown in the image below.

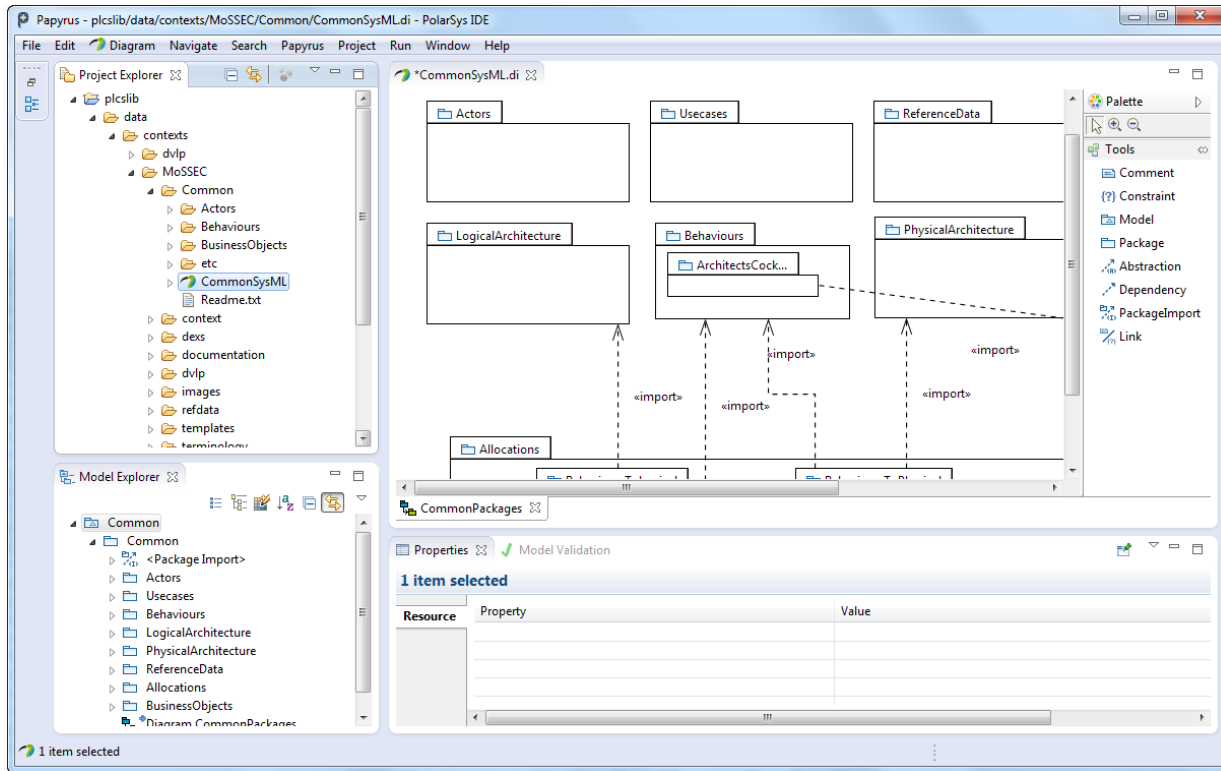


Figure 6 Common SysML model

3. SETUP TOICA

Step 3. Create the TOICA project in [PolarSys/Papyrus](#).

- Select File > New > Project
- Select the General > Project wizard. Click Next

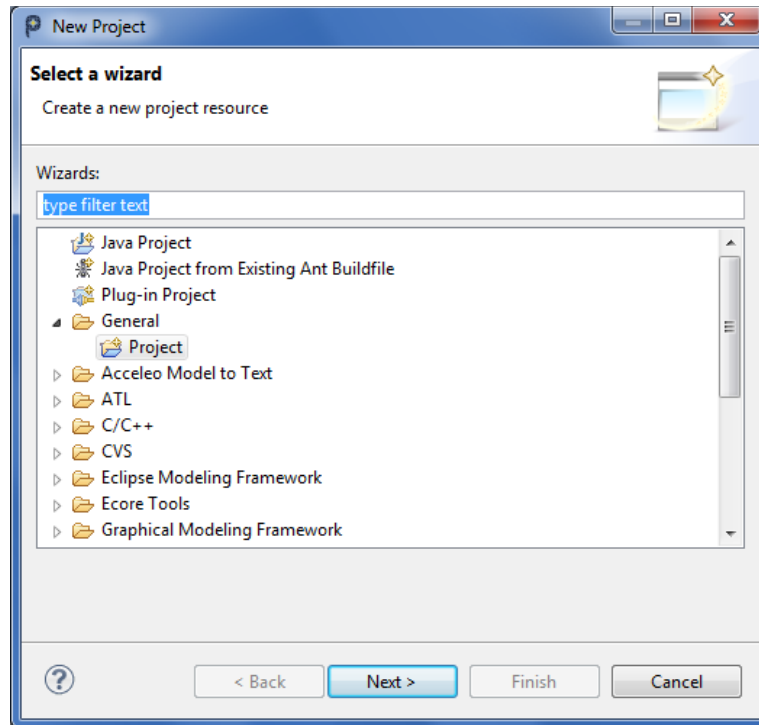


Figure 7 Select the General Project wizard

- Set the project name to TOICA.
- Uncheck the 'Use Default Location', then browse to the TOICA folder from the zip file.
- Click 'Next'

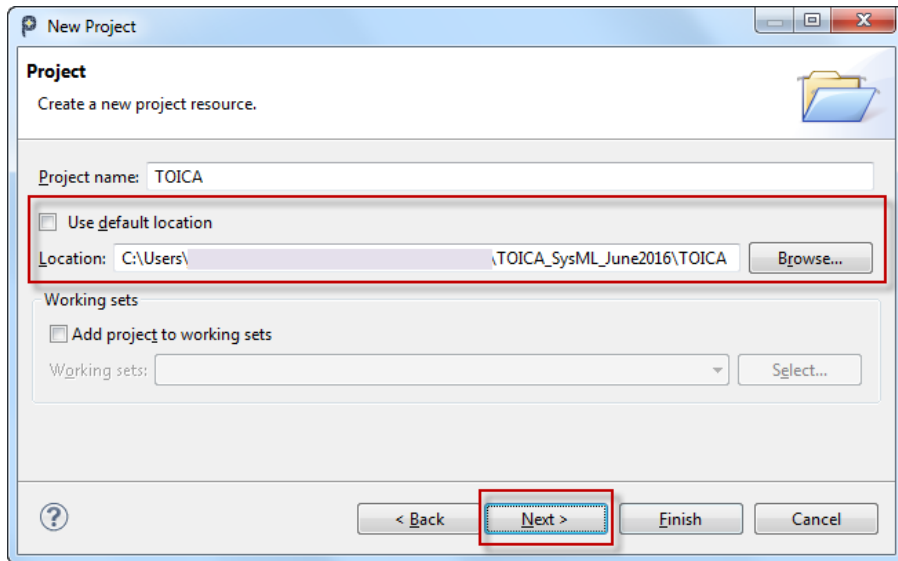


Figure 8 set the project location and name

- Indicate that the TOICA project references the plcslib project using the tick box to the left of plcslib on the project references dialogue.
- Click 'Finish'

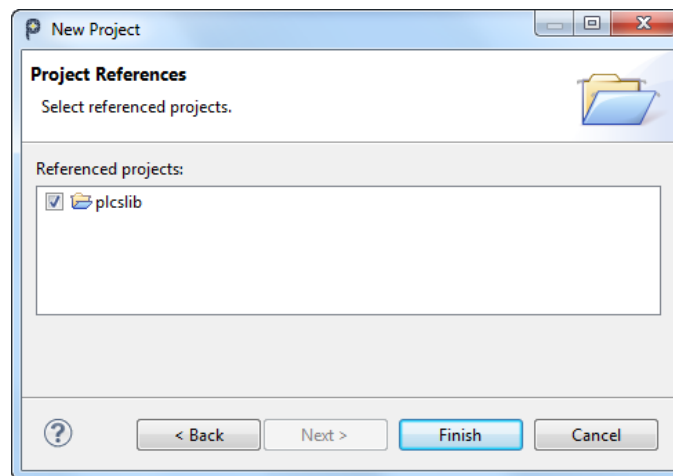


Figure 9 Select plcslib as a reference project

- There is now a TOICA project in the Project Explorer

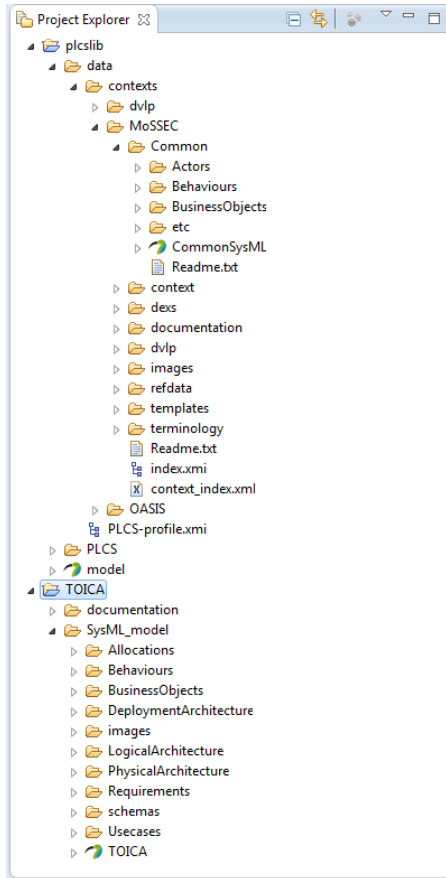


Figure 10 TOICA Project when set up

Optionally open the TOICA model

To open the TOICA SysML model expand the TOICA project. As shown below, the TOICA model is in this folder. Double click to open.

For more details on using Papyrus see https://wiki.eclipse.org/Papyrus_User_Guide



If the model takes a very long time to open, or does not open at all, then you will need to change the 'Window > Preferences > Papyrus > Model Loading' option so that it is any of the last three options i.e. NOT 'Load all the needed resources', See §0 for more details.

The model opens in the "Model Explorer" window. In this window, use the arrows to expand the structure of the model. Double-click on Diagrams to display them in the "Editor" window as shown in the image below.

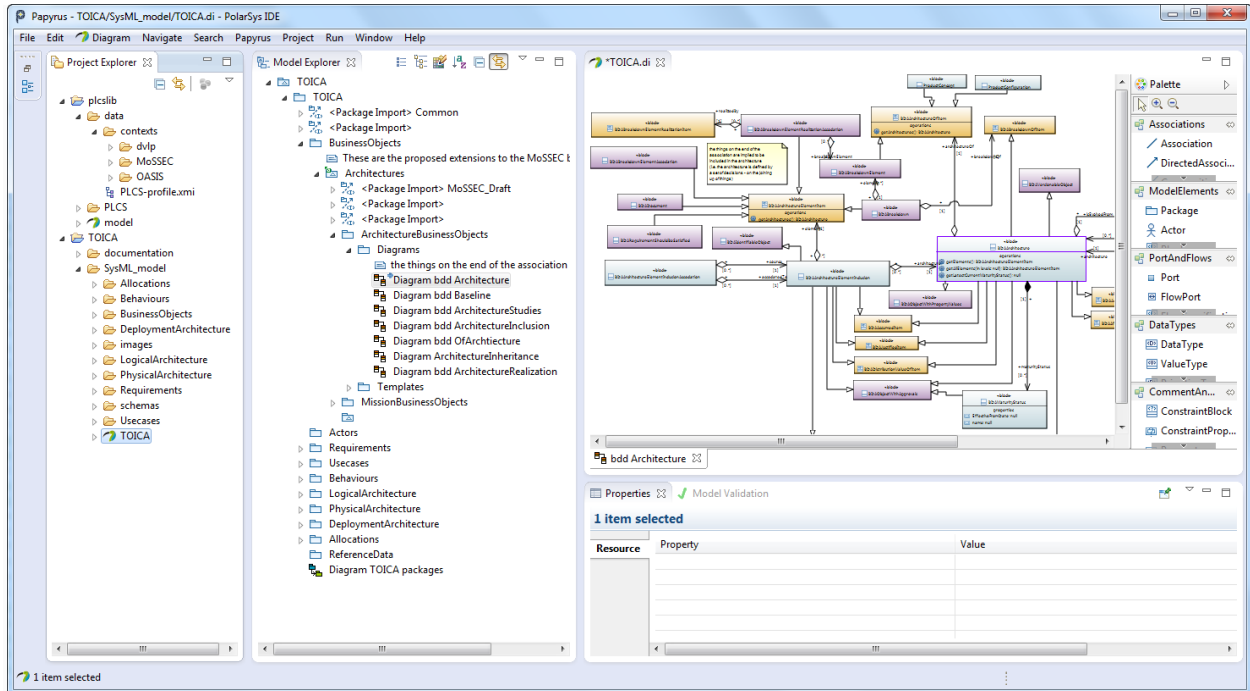


Figure 11 TOICA model opened, with the Architectures Business Objects diagram displayed.

4. SET MODEL LOADING PREFERENCES

Depending on the performance of your computer, it may be necessary to change the "Model Loading" options to Manual as shown below. The 'Select/authorize elements' can be used to state which should always be loaded.

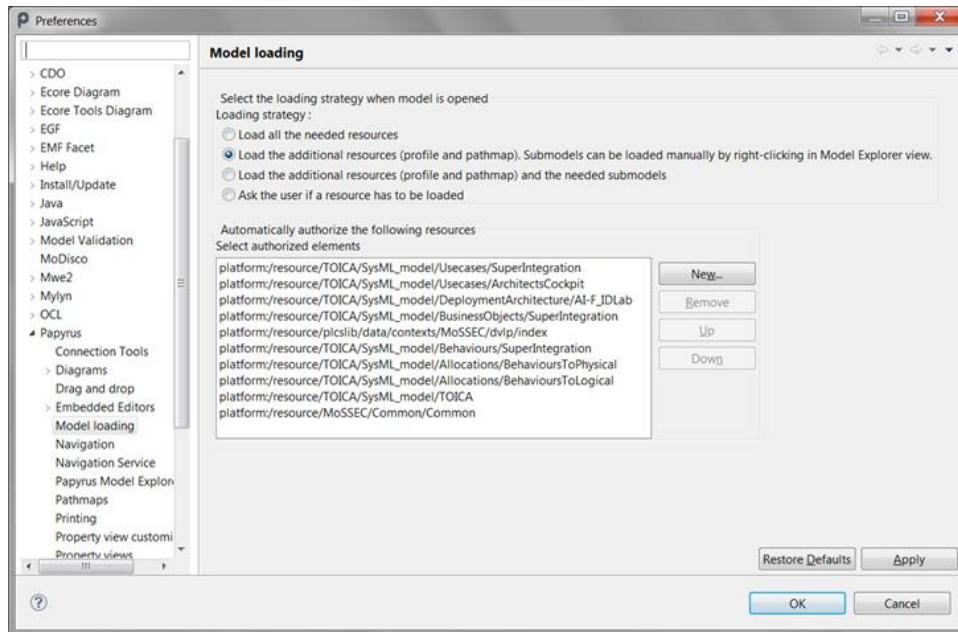


Figure 12 Manual Model loading

When this is set, any imported packages that are not part of the model will not be loaded unless requested. They will appear blank as shown below.

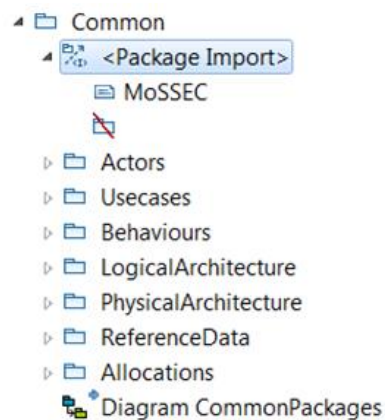


Figure 13 Package that is not loaded

To load the packages Mouse-Right on the package and select "Load".

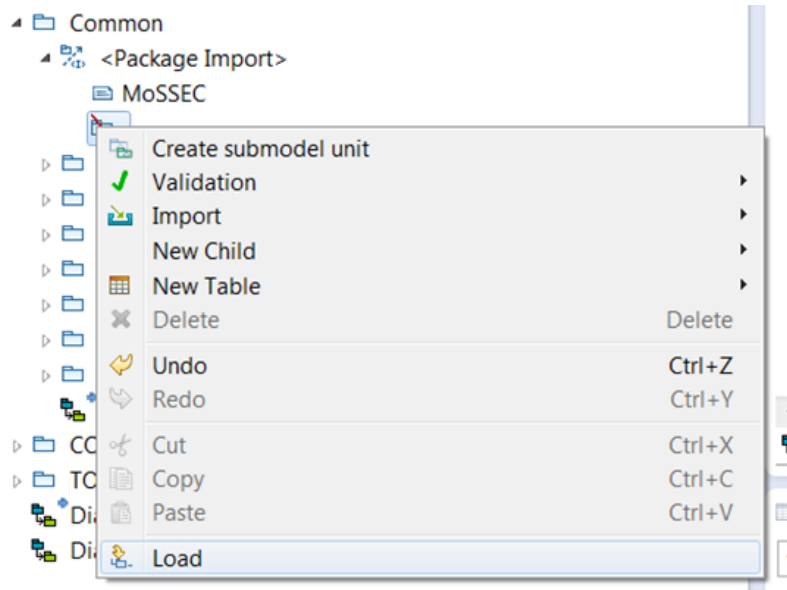


Figure 14 Load the Package

The package content now appears in the tree.

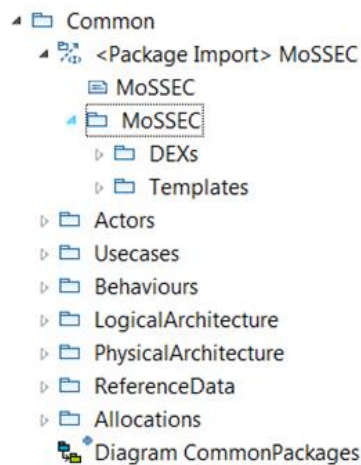


Figure 15 Package is now loaded